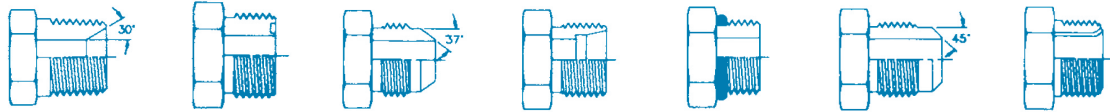




# TABLE DES MESURES DE FILETAGE



Grandeur	NPT	ORFS	JIC 37°	Ermeto	ORB	45° Flare	Inverted Flare
1/8	1/8-27	–	5/16-24	5/16-24	5/16-24	5/16-24	5/16-28
3/16	–	–	3/8-24	3/8-24	3/8-24	3/8-24	3/8-24
1/4	1/4-18	9/16-18	7/16-20	7/16-20	7/16-20	7/16-20	7/16-24
5/16	–	–	1/2-20	1/2-20	1/2-20	1/2-20	1/2-20
3/8	3/8-18	11/16-16	9/16-18	9/16-18	9/16-18	5/8-18	5/8-18
7/16	–	–	–	–	–	11/16-16	11/16-18
1/2	1/2-14	13/16-16	3/4-16	3/4-16	3/4-16	3/4-16	3/4-18
5/8	–	1-14	7/8-14	7/8-14	7/8-14	7/8-14	7/8-18
3/4	3/4-14	1 3/16-12	1 1/16-12	1 1/16-12	1 1/16-12	1 1/16-14	1 1/16-16
7/8	–	1 3/16-12	1 3/16-12	1 3/16-12	1 3/16-12	–	1 3/16-16
1	1-11 1/2	1 7/16-12	1 5/16-12	1 5/16-12	1 5/16-12	–	1 5/16-16
1 1/4	1 1/4-11 1/2	1 11/16-12	1 5/8-12	1 5/8-12	1 5/8-12	–	–
1 1/2	1 1/2-11 1/2	2/12	1 7/8-12	1 7/8-12	1 7/8-12	–	–
2	2-11 1/2	–	2 1/2-12	2 1/2-12	2 1/2-12	–	–
2 1/2	2 1/2-8	–	3-12	–	–	–	–

## FILET BSP

BSPT



BSPP



Grandeur de filet

Diamètre du filet mâle

Diamètre du filet femelle

1/4-19

0.518

0.459

3/8-19

0.656

0.605

1/2-14

0.825

0.744

5/8-14

0.902

0.821

3/4-14

1.041

0.960

1-11

1.309

1.205

1 1/4-11

1.656

1.531

1 1/2-11

1.875

1.781

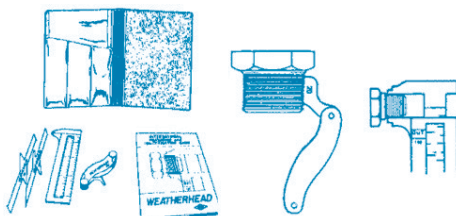
2-11

2.344

2.219

## TA-1002

### KIT DE MESURE DES FILETS



## FILET MÉTRIQUE



Série

Diamètre extérieur du tube

Grandeur du filet métrique

LL

4 mm

8 mm x 1.0

6 mm

10 mm x 1.0

8 mm

12 mm x 1.0

10 mm

14 mm x 1.0

12 mm

16 mm x 1.0

L

6 mm

12 mm x 1.5

8 mm

14 mm x 1.5

10 mm

16 mm x 1.5

12 mm

18 mm x 1.5

15 mm

22 mm x 1.5

18 mm

26 mm x 1.5

22 mm

30 mm x 2.0

28 mm

36 mm x 2.0

35 mm

45 mm x 2.0

42 mm

52 mm x 2.0

S

6 mm

14 mm x 1.5

8 mm

16 mm x 1.5

10 mm

18 mm x 1.5

12 mm

20 mm x 1.5

14 mm

22 mm x 1.5

16 mm

24 mm x 1.5

20 mm

30 mm x 2.0

25 mm

36 mm x 2.0

30 mm

42 mm x 2.0

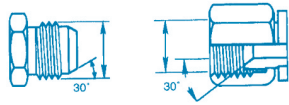
38 mm

52 mm x 2.0



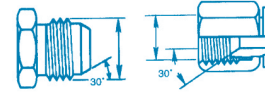
# TABLE DES MESURES DE FILETAGE

## FILET JAPONAIS JIS



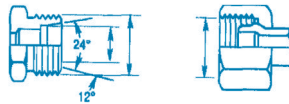
Diamètre nominal	Grandeur de filet (PO)	Diamètre du filet mâle (PO)	Diamètre du filet femelle (PO)
-2	1/8-28	0.375	0.344
-4	1/4-19	0.531	0.437
-6	3/8-19	0.656	0.593
-8	1/2-14	0.812	0.750
-10	5/8-14	0.906	0.812
-12	3/4-14	1.031	0.937
-16	1-11	1.312	1.187
-20	1 1/4-11	1.656	1.531
-24	1 1/2-11	1.875	1.781
-32	2-11	2.344	2.219

## FILET KOMATSU



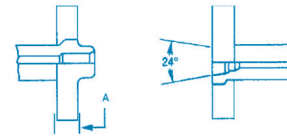
Diamètre nominal	Grandeur du filet métrique	Diamètre du filet mâle (MM)	Diamètre du filet femelle (MM)
-6	M18 x 1.5	18.0	16.4
-8	M22 x 1.5	22.0	20.4
-10	M24 x 1.5	24.0	22.4
-12	M30 x 1.5	30.0	28.4
-16	M33 x 1.5	33.0	31.4
-20	M36 x 1.5	36.0	34.4
-24	M42 x 1.5	42.0	40.4

## Filet Gaz (français)



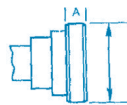
Grandeur du filet métrique	Diamètre du filet mâle (MM)	Diamètre du filet femelle (MM)
M20 x 1.5	20.0	18.5
M24 x 1.5	24.0	22.5
M30 x 1.5	30.0	28.5
M36 x 1.5	36.0	34.5
M45 x 1.5	45.0	43.5
M52 x 1.5	52.0	50.5

## BRIDE GAZ POCLAIN 24°



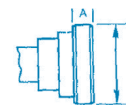
Grandeur nominal	A (PO)
1/2	0.55
5/8	0.55
3/4	0.71

## BRIDE CODE 61



Diamètre nominal	A Épaisseur de bride	Diamètre de bride
-8	0.265	1.188
-10	0.265	1.338
-12	0.265	1.500
-16	0.315	1.750
-20	0.315	2.000
-24	0.315	2.375
-32	0.375	2.812
-40	0.375	3.312
-48	0.375	4.000
-56	0.442	4.500
-64	0.442	5.000
-80	0.442	6.000

## BRIDE CODE 62



Diamètre nominal	A Épaisseur de bride	Diamètre de bride
-8	0.305	1.250
-12	0.345	1.625
-16	0.375	1.875
-20	0.405	2.125
-24	0.495	2.500
-32	0.495	3.125